

Welcome to FaultyMachines.com — the go-to platform for [Samsung washing machine troubleshooting](#), repair advice, and maintenance tips for everyday users dealing with faulty washers and other home appliances.

Founded in **2023** by **Bright Wing**, Faulty Machines was born out of absolute frustration. When our own **Samsung washing machine** began acting up just a few months after purchase, we found ourselves stuck in a laundry nightmare — piles of dirty clothes, confusing manuals, and expensive technician visits. We quickly realized that many households, especially in our community here in **Frankfurt, Germany**, were going through the same struggle.

According to consumer appliance reports across Europe, **6-7% of Samsung washers** experience failure within the first **two years**. Although they can last **12-14 years**, consistent upkeep is crucial. That's where we step in, helping you take control with **simple, step-by-step troubleshooting** and maintenance guides.

Our Mission

At Faulty Machines, our mission is to simplify, make troubleshooting Samsung washing machines accessible, and ensure their effectiveness. We believe most washer faults — from spin cycle failures to power issues — can be solved without hiring a technician, as long as you have the proper guidance.

On our [blog](#), you'll find:

- ☐ Easy-to-follow repair tutorials for Samsung washers
- ☐ Common error code explanations and solutions
- ☐ DIY maintenance checklists
- ☐ Honest washer reviews and model comparisons

We're here to help you **prevent minor problems from becoming significant breakdowns**, save money, and extend the lifespan of your Samsung appliance.



Our Founder - Bright Wing

Hi, I'm Bright Wing, founder of Faulty Machines and your guide to reliable [Samsung washing machine](#) troubleshooting. I'm a hands-on repair enthusiast who learned the hard way how frustrating it is when your washer fails unexpectedly.

With a passion for machines and a heart for helping others, I teamed up with a few like-minded researchers and DIYers to create a space where real-life washer problems are solved with clear, human advice — not robotic instructions.

Why Frankfurt, Germany?

Our small team is based in Frankfurt, Germany, where Samsung washers are a standard feature in homes, but so are complaints about durability and frequent malfunctions. Living here, we noticed a trend: too many reliable machines were breaking down early, simply due to a lack of proper troubleshooting and care.

So we made it our mission to create easy-to-follow guides that empower people to repair their Samsung washers themselves and avoid unnecessary service fees.

Reliable Information You Can Trust

Every article we publish is based on:

- Hands-on testing and research
- Verified repair techniques
- Manufacturer data from the official [Samsung Washing Machine](#)

Our team continually updates content to ensure that you receive accurate and practical solutions to real-world issues.

Let's Connect

Do you have a problem with your Samsung washer? Would you like to suggest a topic or ask a question?

Reach us via our [Contact Page](#) — we're happy to help you solve it!

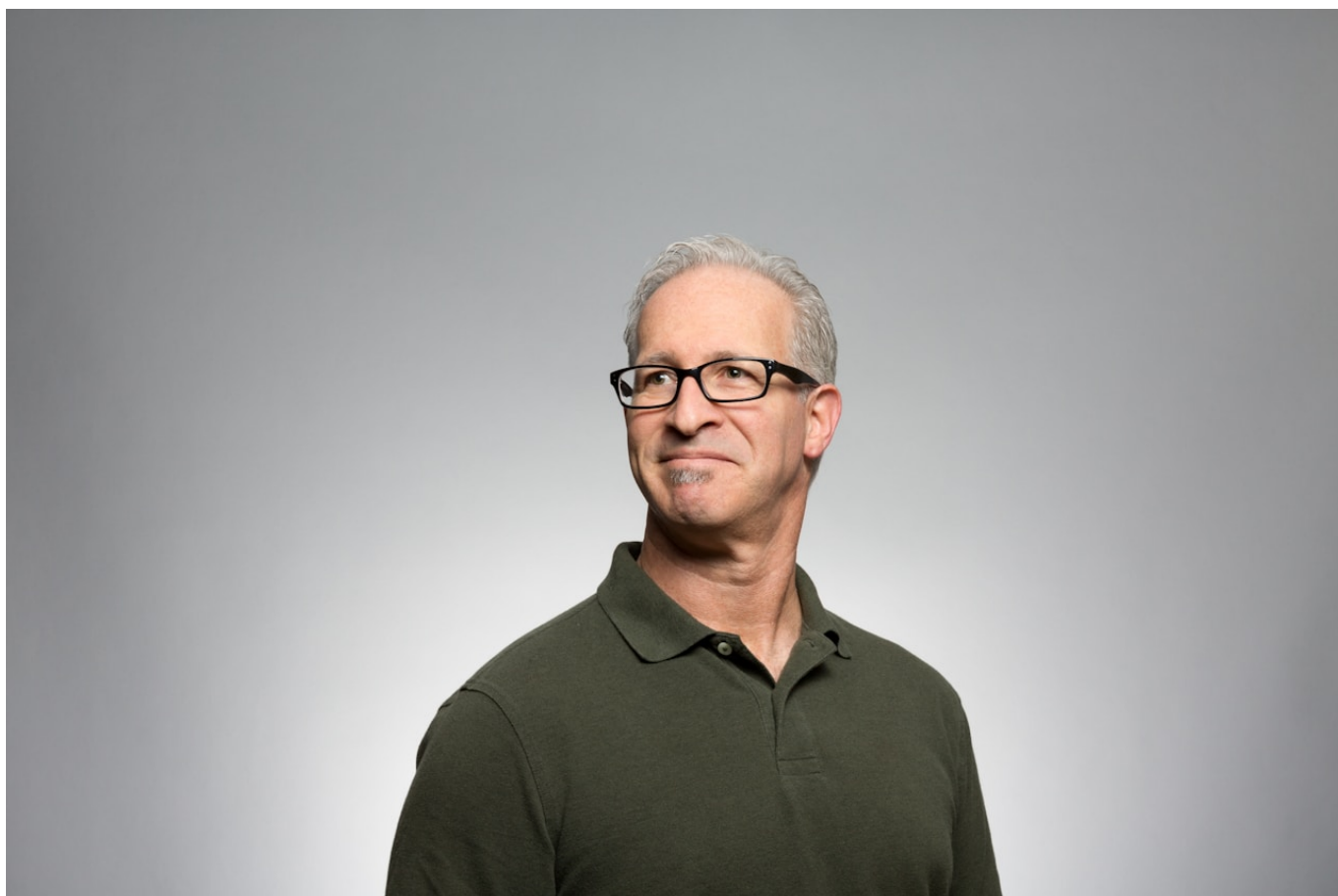
Your Journey to a Better Washing Machine Starts Here

At [FaultyMachines.com](#), we're more than a [blog](#). We're a helpful voice in a frustrating world of appliance breakdowns. Whether your Samsung washing machine won't start, makes strange noises, or stops mid-cycle, our guides are here to support you with the best Samsung washing machine troubleshooting tips out there.

Let's fix it — together.

Our Skilled Team Members

Discover our skilled team of seasoned professionals committed to delivering superior appliance services with expertise and care.



James Fred

Appliance Specialist



Smith Brown

Appliance Specialist



Williams Johnson

Service Expert



Jessica Gold

Service Expert

[Read More](#)